



# Healthcare booklet



At Phoenix Uniforms, we are experts in providing uniforms for the healthcare sector, something we have done since 1996.

We stock a range of core uniform items to help portray the correct image for your brand and can source any other item not currently on our offerings.

For larger companies we can offer bespoke manufacture to their exacting needs and for all we offer an in-house branding service using the latest methods available.

Our strong supply chains and longstanding relationships with suppliers mean we are rarely beaten on any like for like pricing across the range, giving you the comfort of receiving the best value products on the market.

We have many longstanding customers who have partnered with us over two decades, a testament to our quality, services and expertise in this sector.

## Contents

- 3. Ladies Tunics
- 4. Male Tunics
- 5. Scrubs
- 6. Trousers
- 7. Beauty Tunics
- 8. Administration Uniform
- 9. Administration Uniform
- 10. General Workwear
- 11. General Workwear
- 12. General Workwear
- 13. Footwear
- 14. Size Guides
- 15. Enquiries & Order information



## NCLTPS - Healthcare Tunic

Sizes 6-30  
Round collar  
Four pockets with key loop in right pocket  
Action back pleats  
Zip fastening  
65% Polyester / 35% Cotton  
74-77cm length

White:  
£13.95  
Colour:  
£14.95



## NCLTPS - Striped Healthcare Tunic

Sizes 6-30  
Round collar  
Four pockets with key loop in right pocket  
Action back pleats  
Zip fastening  
65% Polyester / 35% Cotton  
74-77cm length

£17.25



## NCLTPSM - Ladies Healthcare Tunic

Sizes 8-22  
Four pockets  
Action back pleats  
Zip fastening  
65% Polyester / 35% Cotton  
77cm length

£15.95



## NCLTPSM - Ladies Healthcare Tunic

Sizes 6-30  
Rounded revere collar  
1 lined left chest pocket, 2 lined right chest pockets  
2 front hip pockets with contrasting trim  
65% Polyester / 35% Cotton

£17.95

Need a Logo? Embroidery or Print, get in touch.



## NCMT - Men's Healthcare Tunic

Sizes 34-50  
Four pockets  
Mock back belt  
Zip fastening with press stud  
65% Polyester / 35% Cotton  
77 - 81cm length

£15.95



## NDMT - Men's Dental Tunic

Sizes 34-54  
Epaulette Loops  
Two pockets  
Studded front side fastening  
65% Polyester / 35% Cotton  
77 - 81cm length

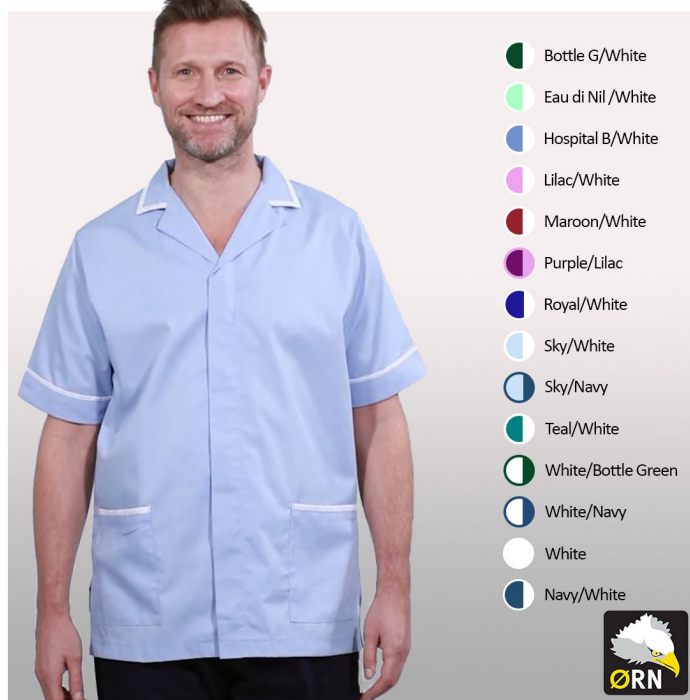
£15.95



## C820 - Men's Classic Tunic

This mens healthcare tunic is made from high quality Kingsmill fabric. Features include tipped collar edge with concealed zip front, a chest scissor pocket and two lower patch pockets. The polyester cotton mix fabric will maintain its fresh look wash after wash.

£13.95



## 8500 - Darwin Male Tunic

Male Tunic  
Contrast Trim On The Collar  
Double action back for comfort  
Concealed zip to prevent possibility of scratching  
Side vents for ease of movement

£18.50

Need a Logo? Embroidery and Print, get in touch.



- Sky/White
- Hospital Blue/White
- Bottle Green/White
- Purple/White
- Metro Blue/White
- Lilac/White
- Navy/White
- Grey/White
- Eau de Nil/White
- Red/Navy
- Royal/White
- Maroon/White
- Navy/Red
- White/Navy



## NSTT - Unisex Contrast Scrub Top

Sizes XS -2XL  
Crossover Neckline  
Three pockets  
65% Polyester / 35% Cotton  
74 - 80cm length

£9.95



- Eau De Nil
- Black
- Bottle Green
- Sky
- Hospital Blue
- Navy
- White
- Maroon
- Royal
- Grey
- Metro Blue
- Teal
- Storm Grey



## NSTP - Unisex Smart Scrub Top

Sizes XS -2XL  
Crossover Neckline  
Three pockets  
65% Polyester / 35% Cotton  
74 - 80cm length

£9.95



- Sky
- Navy
- White
- Royal



## 8800 - Scrub Top

Sizes XS -3XL  
Easy to work, Comfortable to wear  
Three pockets  
65% Polyester / 35% Cotton  
1 breast pock, 2 hip pockets  
top choice for doctors, nurses, vets and dentists

£10.95



- Jade
- Ciel Blue
- Navy



## NST - Reversible Scrub Top

Sizes XS -3XL  
One pocket  
70 - 80cm Length  
65% Polyester / 35% Cotton

£7.50

Need a Logo? Embroidery and Print, get in touch.



- Black
- Bottle Green
- Navy
- Maroon
- Grey

**NLSPCT - Ladies Classic Trousers**

Sizes 6 - 30,  
Leg available - 27" - 29" - 31" - 33" - 35"  
Side Elastication  
Two pockets  
Zip front fastening with Button Closure  
65% Polyester / 35% Cotton

**£12.95**



- Black
- Navy

**NLPCTB - Ladies Classic Bootcut Trousers**

Sizes 6 - 30,  
Leg available - 35" Unhemmed  
Side Elastication  
Two pockets  
Zip front fastening with Button Closure  
65% Polyester / 35% Cotton

**£12.95**



- Black
- Bottle Green
- Navy
- Maroon

**NMPCTP - Mens Pleat Trousers**

Sizes 30" - 50",  
Leg available - 29" - 31" - 33" - 35"  
Sewn in Front Pleats  
Three Pockets  
Zip front fastening with Button Closure  
65% Polyester / 35% Cotton

**£14.50**



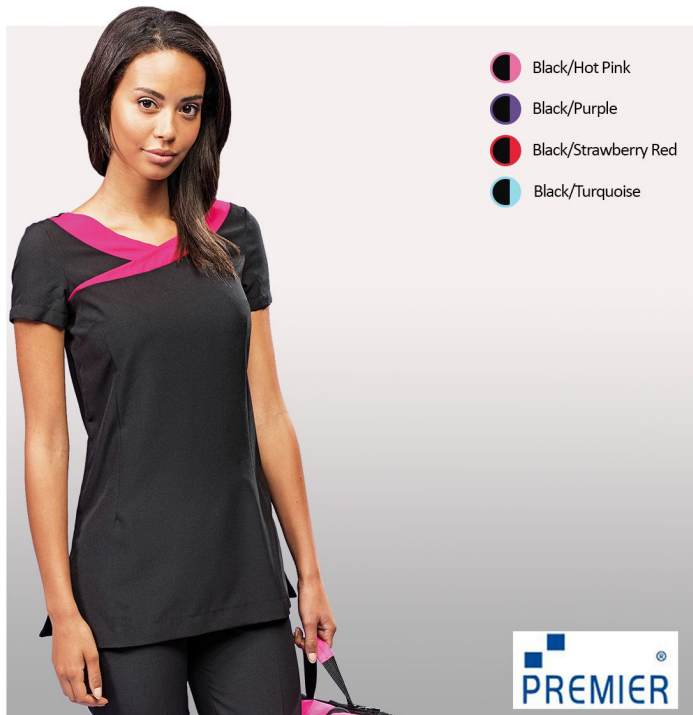
- Eau de Nil
- Black
- Bottle Green
- Sky Blue
- Hospital Blue
- Navy
- Maroon
- Purple
- Royal Blue
- Grey
- Metro Blue
- Teal
- Storm Grey

**NSTR - Unisex Scrub Trousers**

Sizes XS - 2XL  
Leg available - 29" - 31" - 33"  
Fully Elasticated Waist  
Two Side Pockets  
65% Polyester / 35% Cotton

**£9.50**

Need a Logo? Embroidery and Print, Get in touch.



## PR691 - Ivy beauty and spa tunic

Sizes 6 - 24

Beauty and spa tunic with panel detail

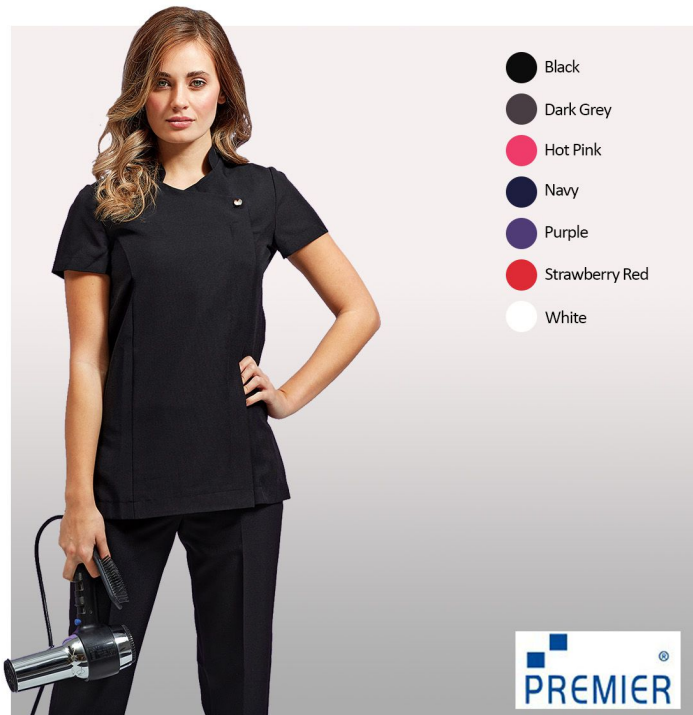
Black contrast panel detail around front neck line

Princess seams and bust darts for flattering fit

Side vents, Back zip fastening, Short sleeves

100% Polyester plain weave

£17.95



## PR683 - Blossom beauty and spa tunic

Sizes 6 - 24

Beauty and spa tunic with feature button front

fastening with concealed zip

Mandarin collar, Short sleeve, Princess seams

Side vents, Back pleat for ease of movement

100% Polyester plain weave

£21.50



## BEAU - Beau Tunic

Sizes 6 - 32

Sloped Neckline

Crystal Button Styling

Front Fastening

100% Polyester

£21.95



## Chloe - Chloe Maternity Tunic

Sizes S -XL

Maternity tunic

Square neckline

Faux button fastening

Back tie to allow the wearer to adjust the tunic sizing

100% Polyester

£36.95

Need a Logo? Embroidery and Print, get in touch.



## 2279 - Roma crepe de chine Blouse

6 - 30 regular  
Long sleeve ladies' blouse  
round neck  
front pleat detail, bust darts  
single gold button cuff  
rear gold zip detail, easy care  
100% Polyester with mechanical stretch

£22.50



## 7539- Rapino Classic Fit Shirt

14.5" - 20"  
Classic Fit  
Long sleeve  
Chest Pocket  
Single button cuff  
55% Cotton, 45% Polyester - easy iron -  
poplin weave - 120gm / Lightweight

£17.95



## 2362 - Ravenna Satin Blouse

6 - 26 Regular  
Semi-fitted  
Half sleeve  
Round neck  
97% Polyester, 3% Elastane - high stretch, easy iron

£23.50



## 7640 - Alba Slim Fit Shirt

14" - 18"  
Easy-to-iron slim fit shirt  
Long sleeve  
twin rear darts for defined silhouette  
semi cutaway collar  
55% Cotton, 45% Polyester - easy iron -  
poplin weave - 120gm / Lightweight

£17.95

Need a Logo? Embroidery and Print, get in touch.



## 2354 - Marino Dress

6 - 26 Regular  
8 - 20 Long  
Centre back vent  
Full stretch lining  
Waistline darts  
Centre back length at size 12R = 97cm  
54% Polyester, 44% Wool, 2% Lycra

£67.95



## 2255 - Saturn Tailored Fit Jacket

8 - 16 Short  
4 - 26 Regular  
10 - 18 Long  
1 button jacket  
Tailored fit  
Slim lapel with seam detail, Centre vent.

£59.95



## 2224 - Numana Straight Skirt

Straight skirt, centre vent, shaped back panels,  
full stretch lining  
4\* - 24 - regular (22")  
8 - 24 - long (25")  
8 - 24 - X-long (27")  
54% Polyester, 44% Wool, 2% Lycra  
\*Size 4 available in solid colours only

8 - 20

£29

22 - 24

£33.95



## 2256 - Venus Straight Leg Trousers

4 - 26 waist in leg lengths  
Regular - 29"  
Long - 31"  
& unfinished - 36"  
Straight leg, slim waistband, with belt loops &  
key loop, 2 side pockets, mock rear pockets.  
100% Polyester

£18.95

Need a Logo? Embroidery and Print, get in touch.



**UC101 - Classic Poloshirt**

50% Polyester 50% Cotton  
Reactive Dyed  
Knitted Collar  
Taped Neck  
Hemmed Sleeve & Bottom  
3 Self Coloured Button Placket

XS-2XL  
**£5.20**  
3XL-5XL  
**£6.20**

**UC902 - Cargo Trouser**

65% Polyester 35% Cotton, Fabric: 245 GSM  
Flat front with sewn-in front crease  
2 side & 2 rear pockets with velcro flaps  
2 thigh pockets with velcro flaps  
Metal rivet button fastening at waist  
Twin belt loops reinforced for extra strength  
Wide belt loops

**£12.95**



**UC106 - Ladies Classic Poloshirt**

Sizes - S - 4XL  
50% Polyester 50% Cotton  
Reactive Dyed, Knitted Collar, Half Moon Yoke  
Open Hem Sleeve, Taped Shoulder & Back Neck  
Side Vents  
Twin Needle Stitching  
3 Self Coloured Button Placket

XS-2XL  
**£5.20**  
3XL-4XL  
**£6.20**

**UC905 - Ladies Cargo Trouser**

65% Polyester 35% Cotton, Fabric: 245 GSM  
Single belt loops reinforced for extra strength  
2 side & 2 rear pockets with velcro flaps  
2 thigh pockets with velcro flaps  
Metal button fastening at waist  
Flat front  
Wide belt loops

**£12.95**

Need a Logo? Embroidery and Print, get in touch.



## UC203 - Classic Sweatshirt

50% Polyester 50% Cotton  
Reactive Dyed  
Set in Sleeve  
Lycra Ribbed Cuffs, Welt & Neck  
Twin Needle Stitching at Neck, Shoulders,  
Armhole+  
Brushed Effect for Superior Comfort & Look

XS-2XL  
**£8.95**  
3XL-5XL  
**£9.95**



## PR171 - Pocket Tabard

Sizes - S - 3XL  
Side tabs with adjustable  
Stud-fastened closures  
Colour-matched bias trim edges, large patch  
pocket  
Crease resistant finish  
65% Polyester, 35% Cotton twill, 195gsm

XS-2XL  
**£8.95**  
3XL  
**£9.95**



## UC604 - Classic Fleece Jacket

Sizes - S - 6XL  
100% Polyester Super Anti Pill Micro Fleece  
Twin Needle Stitching  
Full Self Coloured Zip with Zip Puller  
2 Self Coloured Covered Zipped Pockets with  
Zip Pull, Hanger Loop Inside Neck  
Cadet Style Collar, Half Moon Yoke

XS-2XL  
**£12.20**  
3XL- 6XL  
**£13.20**



## UC608 - Ladies Classic Fleece Jacket

Sizes - S - 4XL  
100% Polyester Super Anti Pill Micro Fleece  
Twin Needle Stitching  
Full Self Coloured Zip with Zip Puller  
2 Self Coloured Covered Zipped Pockets with  
Zip Pull, Hanger Loop Inside Neck  
Cadet Style Collar, Half Moon Yoke

**£12.20**

Need a Logo? Embroidery and Print, get in touch.



- Black
- Burgundy
- Red
- Bottle
- Dark Khaki
- Lime
- Navy
- New Royal
- Otter
- Oxford
- Royal
- Seal Grey

**REGATTA**  
PROFESSIONAL

## TRW297 - Dover Fleece Lined Bomber

220 series anti-pill symmetry fleece lined body  
Waterproof Hydrafort 5000 Polyester fabric  
Taped seams, Windproof fabric, Fleece lined collar  
Thermo-Guard insulation in sleeves  
Concealed hood with adjuster, Adjustable cuffs  
2 zipped lower pockets, Inner patch security pocket  
Stormflap with hook and loop

**£25.95**



- Bottle Green
- Black
- Charcoal
- Light Grey
- Navy
- Red

**uneek**

## UX10 - Printable Softshell Jacket

3 layer bonded fabric, waterproof to 10,000mm  
Outer layer - 93% Polyester 7% Elastane  
Mid layer - TPU waterproof, breathable & windproof membrane  
Inner layer - microfleece - 100% polyester  
Full Self-Coloured Waterproof Zip with Zip Puller  
2 Self-Coloured Covered Zipped Pockets  
Hanger Loop Inside Neck, Wind Resistant

XS-5XL

XS - 2XL

**£15.50**

3XL - 5XL

**£16.50**



Blue

100pcs

**£100**

**phoenixuniforms**  
WORKWEAR SINCE 1996

## D70 - PVC Gown w/thumb loops

Waist back tie  
Thumb loops help secure the sleeve along arms  
Universal size  
Non-sterile  
Latex-free  
Overall length 122cms  
Over shoulder protection



Blue

50pcs

**£2.95**

**phoenixuniforms**  
WORKWEAR SINCE 1996

## D37 - Non-Woven Face Masks

Surgical mask,  
Bacterial filtration efficiency of 98%  
R = Splash resistant, Non-sterile, Pleats style  
with ear loop, 3 Ply - Non woven polypropylene  
Integral nose wire coated strip for optimum fit  
Secure and comfortable fit  
Latex free elastic



- Black
- Pink
- Red
- Bottle
- Grey
- Orange
- Purple
- White
- Yellow
- Blue

**£1.95**

**phoenixuniforms**  
WORKWEAR SINCE 1996

## L001- Lanyard with ID Holder

Plastic Card Holder - Perfect for ID & ICE Cards  
Lanyard is 10mm wide and approx 18 inches long, with break away clip

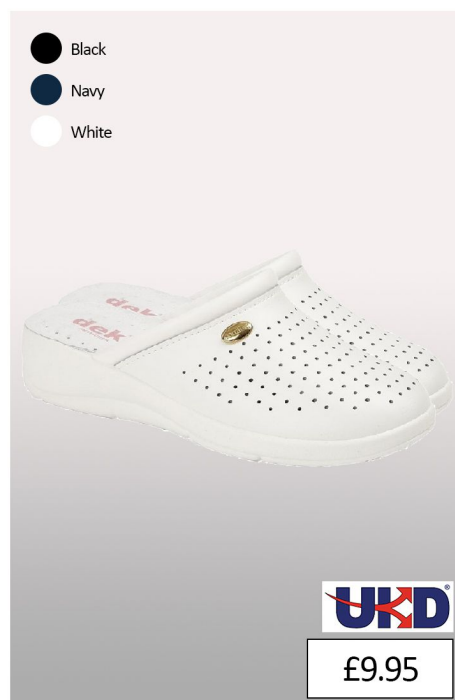
Need a Logo? Embroidery and Print, get in touch.



**SBU02 - Unisex Chukka Safety Boots**  
Black safety chukka boot with steel toe cap and midsole  
Leather upper, padded collar and tongue and D ring lacing system  
Dual density PU shock absorbent, oil and SRC slip resistant sole, Certified to BS EN 20345  
Sizes 3-13



**SBU07 - Unisex Leather Safety Shoe**  
Leather safety shoe with steel toe cap and midsole  
Smooth leather upper with padded collar for additional comfort  
Dual density PU shock absorbent, oil and SRC slip resistant sole  
Certified to BS EN 20345, Antistatic  
Sizes 3-13



**L128G White Coated Leather Clog**  
Padded Leather Footbed  
Blown PVC Sole  
EU36 to 42



**L210gm White Floral Coated Clog**  
Floral Clog  
Leather Lining  
Anti Shock Sock  
Blown PVC Sole  
EU36 to 42



**ROBION - Hygiene Non slip Shoe**  
Upper: Microfibre, Lining: Polyamide  
Footbed: preformed removable Polyamide on EVA  
Outsole: injected bi-density PU  
Shock resistant and crushproof metallic toe-cap (200j), S2 SRC class 1 EN ISO 20345:2004/A1:2007  
Energy absorbing heel, Anti-static protection  
Oil resistant bottom assembly  
Sizes 3-12



**MAUBEC - Hygiene Non slip Clog**  
Upper: Microfibre, Lining: Polyamide  
Footbed: preformed removable Polyamide on EVA  
Outsole: injected bi-density PU  
Shock resistant and crushproof metallic toe-cap (200j), S2 SRC class 1 EN ISO 20345:2004/A1:2007  
Energy absorbing heel, Anti-static protection  
Oil resistant bottom assembly  
Sizes 3-12

Other styles available, contact us for more information

# Size Guides



## MEN'S SIZE CHART – BODY MEASUREMENT

| Size                       | XS    | S       | M       | L       | XL      | 2XL     | 3XL     | 4XL     | 5XL     | 6XL     | 7XL     | 8XL     |
|----------------------------|-------|---------|---------|---------|---------|---------|---------|---------|---------|---------|---------|---------|
| Chest to fit (inch)        | 36-38 | 38-40   | 40-42   | 42-44   | 44-46   | 46-48   | 50-52   | 52-54   | 54-56   | 58-60   | 60-62   | 62-64   |
| Chest to fit (cm)          | 91-96 | 96-102  | 102-107 | 107-112 | 112-117 | 117-122 | 127-132 | 132-137 | 137-142 | 147-152 | 152-157 | 157-162 |
| Shirt Collar to fit (inch) |       | 14.5-15 | 15.5    | 16-16.5 | 17-17.5 | 18-18.5 | 19-19.5 |         |         |         |         |         |
| Shirt Collar to fit (cm)   |       | 37-38   | 39.5    | 41-42   | 43-44.5 | 45.5-47 | 49-49.5 |         |         |         |         |         |
| Trousers                   | 28    | 30      | 32      | 34      | 36      | 38      | 40      | 42      | 44      | 46      | 48      | 50      |
| Waist to fit (inch)        | 28    | 30      | 32      | 34      | 36      | 38      | 40      | 42      | 44      | 46      | 48      | 50      |
| Waist to fit (cm)          | 71    | 76      | 81      | 86      | 91      | 96.5    | 101.5   | 106.5   | 112     | 117     | 122     | 127     |
| Inside leg measurement     |       |         |         |         |         |         |         |         |         |         |         |         |
| Short                      | 29    | 29      | 29      | 29      | 29      | 29      | 29      | 29      | 29      | 29      | 29      | 29      |
| Regular                    | 31    | 31      | 31      | 31      | 31      | 31      | 31      | 31      | 31      | 31      | 31      | 31      |
| Long                       | 33    | 33      | 33      | 33      | 33      | 33      | 33      | 33      | 33      | 33      | 33      | 33      |

## LADIES' SIZE CHART – BODY MEASUREMENT

| Size                   | XS    | S     | M     | L     | XL     | 2XL     | 3XL     | 4XL     | 5XL     | 6XL     |
|------------------------|-------|-------|-------|-------|--------|---------|---------|---------|---------|---------|
| UK size                | 8     | 10    | 12    | 14    | 16     | 18      | 20      | 22      | 24      | 26      |
| Bust to fit (inch)     | 30-32 | 32-34 | 34-36 | 36-38 | 38-40  | 40-42   | 42-44   | 44-46   | 46-48   | 48-50   |
| Bust to fit (cm)       | 76-81 | 81-86 | 86-91 | 91-96 | 96-101 | 101-106 | 106-111 | 111-116 | 116-121 | 121-127 |
| Trousers               | 8     | 10    | 12    | 14    | 16     | 18      | 20      |         |         |         |
| Waist to fit (inch)    | 26    | 28    | 29    | 31    | 33     | 35      | 37      |         |         |         |
| Waist to fit (cm)      | 66    | 71    | 74    | 79    | 84     | 89      | 94      |         |         |         |
| Inside leg measurement |       |       |       |       |        |         |         |         |         |         |
| Regular                | 30    | 30    | 30    | 30    | 30     | 30      | 30      |         |         |         |



SIZE CORRESPONDANCE TABLE

| Europe | 35   | 36   | 37   | 38   | 39   | 40    | 41   | 42   | 43   | 44   | 45     | 46   | 47   | 48   |
|--------|------|------|------|------|------|-------|------|------|------|------|--------|------|------|------|
| UK     | 2    | 3    | 4    | 5    | 6    | 6 1/2 | 7    | 8    | 9    | 10   | 10 1/2 | 11   | 12   | 13   |
| Cm     | 23.1 | 23.7 | 24.4 | 25.1 | 25.7 | 26.4  | 27.1 | 27.8 | 28.4 | 29.1 | 29.7   | 30.3 | 31.0 | 31.6 |



**BEHRENS**  
TEXTILES WITH HERITAGE

*Alexandra*

### MENS TUNICS & TROUSERS

| SIZE               | XS | S     | M       | L       | XL      | 2XL     |
|--------------------|----|-------|---------|---------|---------|---------|
| TO FIT CHEST (INS) | 32 | 34/36 | 38/40   | 42-44   | 46/48   | 50/52   |
| TO FIT CHEST (CM)  | 86 | 91/97 | 102/107 | 109/112 | 117/122 | 127/132 |

|                    |    |    |    |    |    |      |       |       |     |     |     |
|--------------------|----|----|----|----|----|------|-------|-------|-----|-----|-----|
| TO FIT WAIST (INS) | 28 | 30 | 32 | 34 | 36 | 38   | 40    | 42    | 44  | 46  | 48  |
| TO FIT WAIST (CM)  | 71 | 76 | 81 | 86 | 91 | 96.5 | 101.5 | 106.5 | 112 | 117 | 122 |

### UNISEX SCRUBS

| SIZE           | XXS | XS | S  | M  | L   | XL  | 2XL | 3XL |
|----------------|-----|----|----|----|-----|-----|-----|-----|
| CHEST (INCHES) | 26  | 30 | 34 | 38 | 41  | 46  | 50  | 54  |
| CHEST (CMS)    | 66  | 76 | 86 | 97 | 107 | 117 | 127 | 137 |
| WAIST (INCHES) | 20  | 24 | 28 | 32 | 36  | 40  | 44  | 48  |
| WAIST (CMS)    | 51  | 61 | 71 | 81 | 91  | 102 | 112 | 122 |

### LADIES TUNICS AND DRESSES

|                    |    |      |      |      |      |       |       |       |       |       |       |       |       |
|--------------------|----|------|------|------|------|-------|-------|-------|-------|-------|-------|-------|-------|
| DRESS SIZE (UK)    | 6  | 8    | 10   | 12   | 14   | 16    | 18    | 20    | 22    | 24    | 26    | 28    | 30    |
| TO FIT CHEST (INS) | 31 | 32   | 34   | 36   | 38   | 40    | 42    | 44    | 46    | 48    | 50    | 52    | 54    |
| TO FIT CHEST (CM)  | 79 | 81.5 | 86.5 | 91.5 | 96.5 | 101.5 | 106.5 | 111.5 | 116.5 | 121.5 | 126.5 | 131.5 | 136.5 |

### LADIES TROUSERS

|                    |      |    |    |    |    |    |    |    |     |     |     |     |     |
|--------------------|------|----|----|----|----|----|----|----|-----|-----|-----|-----|-----|
| TROUSER SIZE (UK)  | 6    | 8  | 10 | 12 | 14 | 16 | 18 | 20 | 22  | 24  | 26  | 28  | 30  |
| TO FIT WAIST (INS) | 25   | 26 | 28 | 30 | 32 | 34 | 36 | 38 | 40  | 42  | 44  | 46  | 48  |
| TO FIT WAIST (CM)  | 63.5 | 66 | 71 | 76 | 81 | 86 | 91 | 96 | 101 | 106 | 111 | 116 | 121 |

## Enquiries

If you have any questions regarding any of the garments in this booklet or enquiring about alternative styles please call us on 0113 245 5050 or email us at [Sales@phoenixuniforms.co.uk](mailto:Sales@phoenixuniforms.co.uk)

## Personalised orders

We can embroider or print your logo on any garment, if you require this service then please contact us for more information on how we can personalise your order.

Prices start at £1.95

## Prices

All prices in this booklet are excluding VAT.

Delivery charge starts at £5.95+ VAT.

## How to Order

If you wish to purchase any item(s) from this booklet.

For phone sales:

Please ring 0113 245 5050,

Our phone hours are Monday - Friday, 9am - 5pm

For Email sales:

Please email us on [Sales@phoenixuniforms.co.uk](mailto:Sales@phoenixuniforms.co.uk),

please use the codes and titles and quantities required, a delivery address and contact number. We will contact you within 1 working day.

Delivery times

Plain orders - 3 - 6 working days

Personalised orders - 7 - 10 working days

## Service Guaranteed

We will send samples of your logos for your approval before we embroider or print any of your order

If there are any supply issues we will contact you with a solution as soon as possible

**phoenixuniforms**  
WORKWEAR SINCE 1996

0113 245 5050